

How we can help you develop your integrated health and care business intelligence strategy

Our business intelligence (BI) service

Our strategic, analytical and reporting capability can help your integrated care board (ICB), organisation, provider collaborative or place-based partnerships make decisions that are:

- **Data-driven**
- **Address health inequalities, operational, and financial challenges**
- **Drive transformation and enable delivery of outcomes.**

Business intelligence helps health and care systems join-up their data, creating holistic insights that deliver population health management (PHM).



We work alongside you and use our local knowledge and relationships to facilitate the right analysis with the right tools at the right time.

- Enable collaboration between partner organisations to recognise a joint-purpose for data sharing, supporting and enabling decisions to be taken closer to the communities they affect.
- This is known to be more likely to lead to better outcomes.
- It will also support the development of effective models for joined-up working at 'place', capitalising on the transformative potential of digital

Why choose NHS ML?



Work closely with you and your stakeholders and partners engaging with key leaders to understand your requirements.



Inform partners to reach a level of mutual understanding of why change is needed.



Develop skill sets for your people.



Provide reports and tools to enable you to **monitor and forecast** activity, spending, performance and outcomes.



Use **real-time urgent care tools** and risk stratification to identify where need is greatest so that you are able to target clinical interventions that improve outcomes for patients.



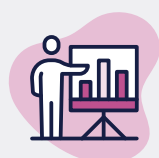
Support an **intelligence-led approach** for health and care in your geography through a suite of documentation: a BI strategy, implementation plans, engagement plan, communications plan, resource & workforce development plans, integration plans.



Provide visualisation of current data and intelligence that support the objectives of the partnership.



Provide comprehensive and detailed **benchmarking** against national peers to understand and evaluate population health improvement, commissioning and contracting opportunities.



Help you to understand and forecast demand and to make decisions on investment to inform local health and care strategy planning.

For more information on our products and services contact us today:

Email: mlcsu.partnerships@nhs.net

mlcsu.co.uk